

STAINLESS STEEL BODY

The PV Series valve allows an abundant flow in spite of its compact size.

Organic Solvent
Stainless Steel Valves

PV Series

ADVANCE

Abundant Flow In Spite of Its Compact Size

Organic Solvent Stainless Steel Valves

PV Series

SUS 316 used for body.

Compact design conserves space.

Stainless steel tube used for connection to various fittings.

1/4" to 1" sizes available.

Application

Organic solvent flow rate control
Cooling water flow rate control



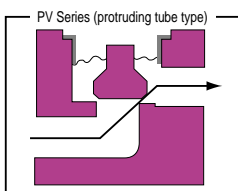
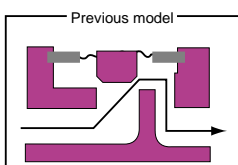
Organic Solvent Stainless Steel Valves

PV-3240/4260/5270/7280 Series

1

Duct Structure

Simple duct structure minimizes pressure loss, leading to smooth flow of liquid.
(Excellent exchangeability)



2

Body

SUS316 is used for the body, enabling the use of a variety of fluids, including organic solvent (IPA, acetone, etc.), cooling water, rinsing water, etc.

4

Flow Rate Control Mechanism (Optional)

The flow rate can be controlled manually.

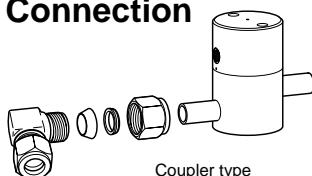
5

Minimum Rubbing Resistance

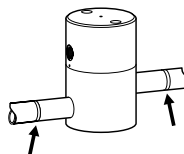
Use of MY packing produces extremely smooth piston movement.

3

Connection



Coupler type



Welding type

Uses an EP tube suitable for semiconductor production processes.
The stainless steel tubes can accommodate various fittings, such as seamless type fittings, Swagelok ® type, Flowell IW Series, etc.
Note: Swagelok is a registered trademark of CAJON Corp

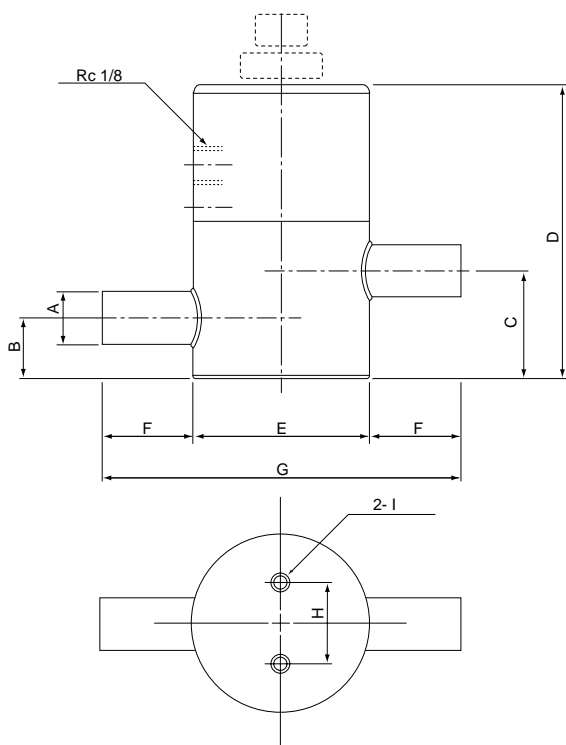
6

Diaphragm

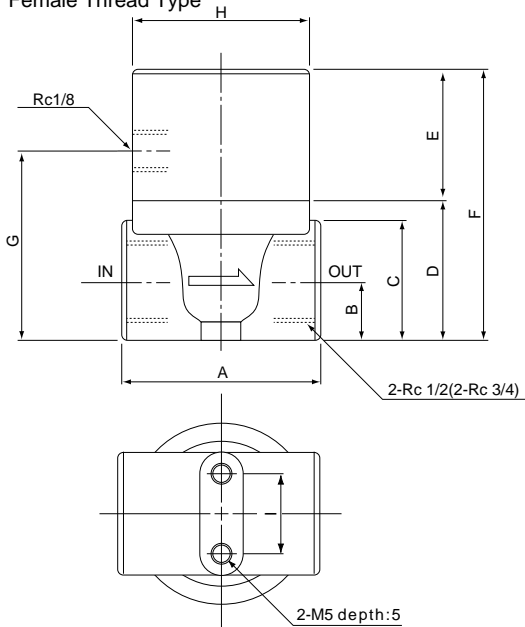
Integral Precision Processing of P-TFE. Processing technology allows a reduction in size.
Area under pressure is reduced by 30% compared to previous models.
This makes it possible to reduce actuator force (position operational force) and reduce the overall size.
Outstanding configuration for repeated flexing operations (flex life).
P-TFE offering outstanding repeated flexing operations is selected.

Standard Specifications

EP Protruding Tube Type



Female Thread Type



Figures in brackets are dimensions of PV-5270.

Series	Connection	Orifice	Cv valves
PV-3240-831Ti	OD1/4"	φ5	0.27
PV-4260-831Ti	OD1/2"	φ10	1.5
PV-5270-831Ti	OD3/4"	φ16	4.2
PV-7280-831Ti	OD 1"	φ22	8.5

Fluid pressure	IN side	0.3MPa
	OUT side	0.1MPa
Fluid temp.	For operation at room temp.	10 ~ 130
Actuation	Spring return format	
Actuating pressure	0.3 ~ 0.6MPa	
Liquid-contact surface materials	Diaphragm	P • TFE
	Valve body	SUS316

Series	Connection A	B	C	D
PV-3240-831Ti	OD1/4"	10	10	57
PV-4260-831Ti	OD1/2"	14	26	72
PV-5270-831Ti	OD3/4"	20	40	104
PV-7280-831Ti	OD 1"	23	47	137

E	F	G	H	I
φ40	17	74	22	M4 depth:5
φ45	22.5	90	20	M5 depth:5
φ55	32.5	120	30	M5 depth:5
φ70	45	160	40	M6 depth:10

(mm)

Series	Connection	Orifice	Cv valves
PV-4260-831	Rc1/2	φ10	1.5
PV-5270-831	Rc3/4	φ16	4.2

Fluid pressure	IN side	0.3MPa
	OUT side	0.1MPa
Fluid temp.	For operation at room temp.	10 ~ 80
Actuation	Spring return format	
Actuating pressure	0.3 ~ 0.6MPa	
Liquid-contact surface materials	Diaphragm	P • TFE
	Valve body	SUS316

Series	Connection	A	B	C
PV-4260-831	Rc1/2	50	15	φ30
PV-5270-831	Rc3/4	65	20	φ40

D	E	F	G	H	I
35	32	67	47	φ45	20
46	44	90	61	φ55	30

(mm)

Type Selection Table

	Series No.	Operation	Connection	Base	Body material	Diaphragm material	Fitting	Optional
	PV-	2		0	8	31		
(e.g.) PV-5270-831TiZ	3 1/4	2 NC	4 φ10 1/4"	0 Standard	8 SUS316	31 P • TFE	None Ti Female thread type EP protruding tube type	Z Flow rate control
	4 1/2		6 φ10 1/2"					
	5 3/4		7 φ16 3/4"					
	7 3/4		8 φ22 1"					